



TRANSMISSIONS



Mechanical Power Transmission



Agriculture



Automotive



Construction



Industrial



Motor Sport

WE LOVE OUR PRODUCTS.

“We are proud to be a European manufacturer; it is a privilege to supply our products to some of the world’s most prestigious original equipment manufacturers in the Agricultural, Automotive, Construction, Industrial and Motor Sport sectors”.

“Our distributor network is vital to the continued global growth of the DUNLOP brand and our valued distributor partners form the perfect link between manufacturer and end user”.

“Our commitment to our staff, our customers and the environment is of paramount importance to our company, we will continue to develop our organisational skills to further enhance our company’s potential, to engage in sustainable practices and anticipate the needs and expectations of our customers”.

“We love our products”.

Ray Mifsud, Managing Director.

A handwritten signature in black ink, appearing to read 'R. Mifsud'.



Manufacturing Facilities, Consett, Co. Durham UK

Unit 46, Werdolh Way,
No 1 Industrial Estate,
Consett, County Durham
DH8 6SZ , United Kingdom

European Distribution Centre, Ashford, Kent UK

MPT House, Brunswick Road
Cobbs Wood Industrial Estate
Ashford, Kent
TN23 1EL , United Kingdom








“We are proud to be a European manufacturer; it is a privilege to supply our products to some of the world’s most prestigious original equipment manufacturers in the Agricultural, Automotive, Construction, Industrial and Motor Sport sectors”.

“Our distributor network is vital to the continued global growth of the DUNLOP brand and our valued distributor partners form the perfect link between manufacturer and end user”.

“Our commitment to our staff, our customers and the environment is of paramount importance to our company, we will continue to develop our organisational skills to further enhance our company’s potential, to engage in sustainable practices and anticipate the needs and expectations of our customers”.

“At Dunlop BTL we love our products”.

Ray Mifsud, *Managing Director.*

| | |
|---|------------|
|  | English |
|  | Español |
|  | Italiano |
|  | Deutsch |
|  | Français |
|  | Nederlands |
|  | Polskie |

Engineering Data 74

Datos de ingeniería • Dati ingegneristici • Technische gegevens
 Données d'ingénierie • Technische gegevens • Dane Inżynieria

J - Section 75

J - sección • J - sezione • J - Bereich
 J - section • J - sectie • J - Sekcja

K - Section 76

K - sección • K - sezione • K - Sektion
 K - section • K - sectie • K - Sekcja

L - Section 77

L - sección • L - sezione • L - Sektion
 L - section • L - sectie • L - Sekcja

M - Section 78

M - sección • M - sezione • M - Sektion
 M - section • M - sectie • M - Sekcja



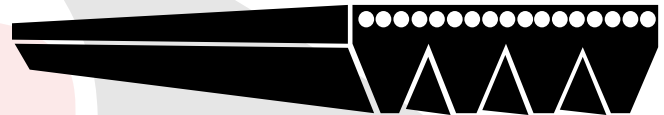
MICRO (POLY) V-BELTS

DUNLOP Micro V Belt combine high flexibility and the light weight of flat belts with the grip of V-Belts, this creates a high power rated special rib profile.

Micro V-Belts are endless rubber belts with longitudinal V shaped grooves. They transmit the motor power by friction from the driver to the driven side of a machine, giving the following advantages:

CONSTRUCTION AND FEATURES

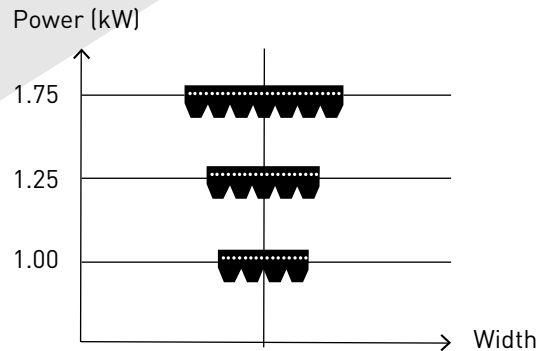
- The top layer is fabric-reinforced resisting reverse bending and possible wear caused by a back idler.
- The specially treated high-strength tensile member withstands the stresses with reduced and stable elongation.
- The longitudinally ribbed high-grip elastomer base offers a large contact surface.
- Compact smooth running drive system with low vibration.
- Difficult drive configurations such as serpentine or twisted drives, can be designed due to the high flexibility.
- Good resistance to mineral oils and temperatures between -30°C and +60°C (+80°C for short periods).
- Suitable for environments of high humidity.
- Suitable for H, J, K, L and M pulley profiles as specified in DIN 7867 and ISO 9982 and are also suitable for pulley profiles as specified in RMA IP26 and ASAE S 211.5 standards.
- Meets ISO standard 1813 for static conductivity.



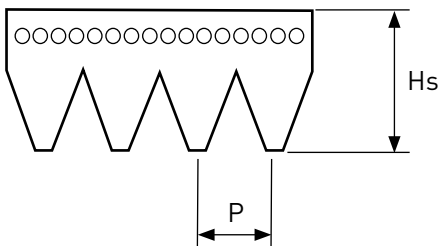
APPLICATIONS

For a given application, the belt is cut to the required number of ribs thus closely matching the required power rating. This makes it possible to obtain a unique, customised belt with optimum overall size.

The key qualities of DUNLOP Micro V belts are that for a given application vibrations are reduced and there is no need for the matching of sets.



PHYSICAL CHARACTERISTICS



| | H | J | K | L | M |
|---------------------------------|------|------|------|------|-------|
| Centre distance P (mm) | 1.60 | 2.34 | 3.56 | 4.70 | 9.40 |
| Height Hs (mm) | 3.0 | 3.5 | 6.0 | 9.5 | 16.5 |
| Weight per rib (g/m) | 5.9 | 8.4 | 20 | 30.9 | 124.1 |
| Min. pulleys diameter (mm) | 13 | 20 | 40 | 75 | 180 |
| Min. reverse bend diameter (mm) | 32 | 45 | 70 | 140 | 300 |

The belt code refers to the effective length in millimetres measured at the top of the pulleys, i.e. at the root of the belt ribs.



MICRO V-BELTS



MICRO V-BELTS

Description

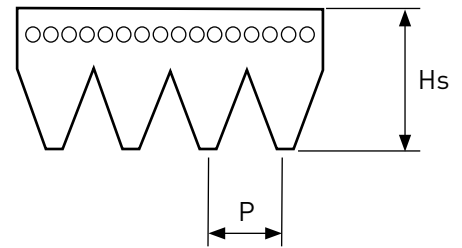
High Performance Micro V-Belts in endless construction and with triangular ribs running along the length of the belt, the entire power is transmitted by a single belt.

Drives can be reduced in size when compared with traditional V-belt drives as smaller pulleys can be used that will transmit equal or higher loads thereby reducing space requirements and cost.

Higher ratios and increased belt speeds can also be achieved.

Part numbers are identified by a 3 or 4 digit number (e.g. 1321) which represents the nominal length in mm, a letter (e.g. J) the cross section and a 2 digit number (e.g. 08) the number of ribs. 1321J08 etc.

| Part No. | BELT TYPE | |
|----------|-----------|-------|
| | PITCH | Hs |
| J | 2.34 | 4.00 |
| K | 3.56 | 5.50 |
| L | 4.70 | 9.50 |
| M | 9.40 | 16.70 |



J CROSS SECTION

| Part No. | Effective Length (mm) | Effective Length (inches) |
|----------|-----------------------|---------------------------|
| 197J/RIB | 197 | 7.8 |
| 207J/RIB | 207 | 8.1 |
| 234J/RIB | 234 | 9.2 |
| 254J/RIB | 254 | 10.0 |
| 267J/RIB | 267 | 10.5 |
| 274J/RIB | 274 | 10.8 |
| 288J/RIB | 288 | 11.3 |
| 300J/RIB | 300 | 11.8 |
| 305J/RIB | 305 | 12.0 |
| 330J/RIB | 330 | 13.0 |
| 350J/RIB | 350 | 13.8 |
| 356J/RIB | 356 | 14.0 |
| 381J/RIB | 381 | 15.0 |
| 406J/RIB | 406 | 16.0 |
| 428J/RIB | 428 | 16.9 |
| 432J/RIB | 432 | 17.0 |
| 457J/RIB | 457 | 18.0 |
| 483J/RIB | 483 | 19.0 |
| 495J/RIB | 495 | 19.5 |
| 508J/RIB | 508 | 20.0 |
| 533J/RIB | 533 | 21.0 |
| 559J/RIB | 559 | 22.0 |
| 584J/RIB | 584 | 23.0 |
| 610J/RIB | 610 | 24.0 |
| 635J/RIB | 635 | 25.0 |
| 650J/RIB | 650 | 25.6 |
| 660J/RIB | 660 | 26.0 |
| 685J/RIB | 685 | 27.0 |

| Part No. | Effective Length (mm) | Effective Length (inches) |
|-----------|-----------------------|---------------------------|
| 711J/RIB | 711 | 28.0 |
| 723J/RIB | 723 | 28.5 |
| 726J/RIB | 726 | 28.6 |
| 737J/RIB | 737 | 29.0 |
| 762J/RIB | 762 | 30.0 |
| 769J/RIB | 769 | 30.3 |
| 787J/RIB | 787 | 31.0 |
| 790J/RIB | 790 | 31.1 |
| 813J/RIB | 813 | 32.0 |
| 838J/RIB | 838 | 33.0 |
| 864J/RIB | 864 | 34.0 |
| 889J/RIB | 889 | 35.0 |
| 895J/RIB | 895 | 35.2 |
| 914J/RIB | 914 | 36.0 |
| 938J/RIB | 938 | 36.9 |
| 944J/RIB | 944 | 37.2 |
| 955J/RIB | 955 | 37.6 |
| 960J/RIB | 960 | 37.8 |
| 965J/RIB | 965 | 38.0 |
| 990J/RIB | 990 | 39.0 |
| 995J/RIB | 995 | 39.2 |
| 1016J/RIB | 1016 | 40.0 |
| 1036J/RIB | 1036 | 40.8 |
| 1040J/RIB | 1040 | 40.9 |
| 1051J/RIB | 1051 | 41.4 |
| 1054J/RIB | 1054 | 41.5 |
| 1059J/RIB | 1059 | 41.7 |
| 1065J/RIB | 1065 | 41.9 |

| Part No. | Effective Length (mm) | Effective Length (inches) |
|-----------|-----------------------|---------------------------|
| 1067J/RIB | 1067 | 42.0 |
| 1080J/RIB | 1080 | 42.5 |
| 1089J/RIB | 1089 | 42.9 |
| 1092J/RIB | 1092 | 43.0 |
| 1100J/RIB | 1100 | 43.3 |
| 1105J/RIB | 1105 | 43.5 |
| 1108J/RIB | 1108 | 43.6 |
| 1110J/RIB | 1110 | 43.7 |
| 1116J/RIB | 1116 | 43.9 |
| 1118J/RIB | 1118 | 44.0 |
| 1123J/RIB | 1123 | 44.2 |
| 1126J/RIB | 1126 | 44.3 |
| 1130J/RIB | 1130 | 44.5 |
| 1136J/RIB | 1136 | 44.7 |
| 1143J/RIB | 1143 | 45.0 |
| 1150J/RIB | 1150 | 45.3 |
| 1160J/RIB | 1160 | 45.7 |
| 1168J/RIB | 1168 | 46.0 |
| 1170J/RIB | 1170 | 46.1 |
| 1184J/RIB | 1184 | 46.6 |
| 1190J/RIB | 1190 | 46.9 |
| 1194J/RIB | 1194 | 47.0 |
| 1200J/RIB | 1200 | 47.2 |
| 1203J/RIB | 1203 | 47.4 |
| 1210J/RIB | 1210 | 47.6 |
| 1214J/RIB | 1214 | 47.8 |
| 1219J/RIB | 1219 | 48.0 |
| 1222J/RIB | 1222 | 48.1 |

J - SECTION continued

| Part No. | Effective Length (mm) | Effective Length (inches) |
|-----------|-----------------------|---------------------------|
| 1232J/RIB | 1232 | 48.5 |
| 1236J/RIB | 1236 | 48.7 |
| 1244J/RIB | 1244 | 49.0 |
| 1262J/RIB | 1262 | 49.7 |
| 1270J/RIB | 1270 | 50.0 |
| 1280J/RIB | 1280 | 50.4 |
| 1283J/RIB | 1283 | 50.5 |
| 1285J/RIB | 1285 | 50.6 |
| 1287J/RIB | 1287 | 50.7 |
| 1295J/RIB | 1295 | 51.0 |
| 1302J/RIB | 1302 | 51.3 |
| 1309J/RIB | 1309 | 51.5 |
| 1315J/RIB | 1315 | 51.8 |
| 1318J/RIB | 1318 | 51.9 |
| 1321J/RIB | 1321 | 52.0 |
| 1326J/RIB | 1326 | 52.2 |
| 1333J/RIB | 1333 | 52.5 |
| 1355J/RIB | 1355 | 53.3 |
| 1365J/RIB | 1365 | 53.7 |
| 1371J/RIB | 1371 | 54.0 |

| Part No. | Effective Length (mm) | Effective Length (inches) |
|-----------|-----------------------|---------------------------|
| 1397J/RIB | 1397 | 55.0 |
| 1428J/RIB | 1428 | 56.2 |
| 1439J/RIB | 1439 | 56.7 |
| 1461J/RIB | 1461 | 57.5 |
| 1473J/RIB | 1473 | 58.0 |
| 1524J/RIB | 1524 | 60.0 |
| 1549J/RIB | 1549 | 61.0 |
| 1600J/RIB | 1600 | 63.0 |
| 1626J/RIB | 1626 | 64.0 |
| 1651J/RIB | 1651 | 65.0 |
| 1663J/RIB | 1663 | 65.5 |
| 1702J/RIB | 1702 | 67.0 |
| 1752J/RIB | 1752 | 69.0 |
| 1778J/RIB | 1778 | 70.0 |
| 1854J/RIB | 1854 | 73.0 |
| 1895J/RIB | 1895 | 74.6 |
| 1910J/RIB | 1910 | 75.2 |
| 1930J/RIB | 1930 | 76.0 |
| 1956J/RIB | 1956 | 77.0 |
| 1960J/RIB | 1960 | 77.2 |

| Part No. | Effective Length (mm) | Effective Length (inches) |
|-----------|-----------------------|---------------------------|
| 1965J/RIB | 1965 | 77.4 |
| 1978J/RIB | 1978 | 77.9 |
| 1981J/RIB | 1981 | 78.0 |
| 1992J/RIB | 1992 | 78.4 |
| 2019J/RIB | 2019 | 79.5 |
| 2064J/RIB | 2064 | 81.3 |
| 2083J/RIB | 2083 | 82.0 |
| 2135J/RIB | 2135 | 84.1 |
| 2155J/RIB | 2155 | 84.8 |
| 2210J/RIB | 2210 | 87.0 |
| 2286J/RIB | 2286 | 90.0 |
| 2337J/RIB | 2337 | 92.0 |
| 2413J/RIB | 2413 | 95.0 |
| 2489J/RIB | 2489 | 98.0 |
| 2870J/RIB | 2870 | 113.0 |
| 3154J/RIB | 3154 | 124.2 |
| 3500J/RIB | 3500 | 137.8 |
| 4000J/RIB | 4000 | 157.5 |

K - SECTION

| Part No. | Effective Length (mm) | Effective Length (inches) |
|----------|-----------------------|---------------------------|
| 526K/RIB | 526 | 20.7 |
| 560K/RIB | 560 | 22.0 |
| 575K/RIB | 575 | 22.6 |
| 582K/RIB | 582 | 22.9 |
| 597K/RIB | 597 | 23.5 |
| 633K/RIB | 633 | 24.9 |
| 648K/RIB | 648 | 25.5 |
| 655K/RIB | 655 | 25.8 |
| 673K/RIB | 673 | 26.5 |
| 682K/RIB | 682 | 26.9 |
| 698K/RIB | 698 | 27.5 |
| 710K/RIB | 710 | 28.0 |
| 730K/RIB | 730 | 28.7 |
| 740K/RIB | 740 | 29.1 |
| 751K/RIB | 751 | 29.6 |
| 755K/RIB | 755 | 29.7 |
| 770K/RIB | 770 | 30.3 |
| 775K/RIB | 775 | 30.5 |
| 790K/RIB | 790 | 31.1 |
| 805K/RIB | 805 | 31.7 |
| 810K/RIB | 810 | 31.9 |
| 815K/RIB | 815 | 32.1 |
| 818K/RIB | 818 | 32.2 |
| 830K/RIB | 830 | 32.7 |

| Part No. | Effective Length (mm) | Effective Length (inches) |
|-----------|-----------------------|---------------------------|
| 841K/RIB | 841 | 33.1 |
| 865K/RIB | 865 | 34.1 |
| 869K/RIB | 869 | 34.2 |
| 870K/RIB | 870 | 34.3 |
| 875K/RIB | 875 | 34.4 |
| 880K/RIB | 880 | 34.6 |
| 884K/RIB | 884 | 34.8 |
| 888K/RIB | 888 | 35.0 |
| 903K/RIB | 903 | 35.6 |
| 915K/RIB | 915 | 36.0 |
| 920K/RIB | 920 | 36.2 |
| 926K/RIB | 926 | 36.5 |
| 938K/RIB | 938 | 36.9 |
| 954K/RIB | 954 | 37.6 |
| 960K/RIB | 960 | 37.8 |
| 970K/RIB | 970 | 38.2 |
| 990K/RIB | 990 | 39.0 |
| 995K/RIB | 995 | 39.2 |
| 1000K/RIB | 1000 | 39.4 |
| 1015K/RIB | 1015 | 40.0 |
| 1030K/RIB | 1030 | 40.6 |
| 1035K/RIB | 1035 | 40.7 |
| 1050K/RIB | 1050 | 41.3 |
| 1080K/RIB | 1080 | 42.5 |

| Part No. | Effective Length (mm) | Effective Length (inches) |
|-----------|-----------------------|---------------------------|
| 1095K/RIB | 1095 | 43.1 |
| 1110K/RIB | 1110 | 43.7 |
| 1125K/RIB | 1125 | 44.3 |
| 1130K/RIB | 1130 | 44.5 |
| 1146K/RIB | 1146 | 45.1 |
| 1149K/RIB | 1149 | 45.2 |
| 1165K/RIB | 1165 | 45.9 |
| 1194K/RIB | 1194 | 47.0 |
| 1205K/RIB | 1205 | 47.4 |
| 1222K/RIB | 1222 | 48.1 |
| 1230K/RIB | 1230 | 48.4 |
| 1253K/RIB | 1253 | 49.3 |
| 1272K/RIB | 1272 | 50.1 |
| 1280K/RIB | 1280 | 50.4 |
| 1295K/RIB | 1295 | 51.0 |
| 1314K/RIB | 1314 | 51.7 |
| 1330K/RIB | 1330 | 52.4 |
| 1345K/RIB | 1345 | 53.0 |
| 1360K/RIB | 1360 | 53.5 |
| 1387K/RIB | 1387 | 54.6 |
| 1397K/RIB | 1397 | 55.0 |
| 1420K/RIB | 1420 | 55.9 |
| 1425K/RIB | 1425 | 56.1 |
| 1435K/RIB | 1435 | 56.5 |

K - SECTION continued

| Part No. | Effective Length (mm) | Effective Length (inches) |
|-----------|-----------------------|---------------------------|
| 1460K/RIB | 1460 | 57.5 |
| 1479K/RIB | 1479 | 58.2 |
| 1496K/RIB | 1496 | 58.9 |
| 1520K/RIB | 1520 | 59.8 |
| 1530K/RIB | 1530 | 60.2 |
| 1549K/RIB | 1549 | 61.0 |
| 1560K/RIB | 1560 | 61.4 |
| 1570K/RIB | 1570 | 61.8 |
| 1580K/RIB | 1580 | 62.2 |
| 1601K/RIB | 1601 | 63.0 |
| 1610K/RIB | 1610 | 63.4 |
| 1626K/RIB | 1626 | 64.0 |
| 1630K/RIB | 1630 | 64.2 |
| 1645K/RIB | 1645 | 64.8 |
| 1658K/RIB | 1658 | 65.3 |
| 1664K/RIB | 1664 | 65.5 |
| 1682K/RIB | 1682 | 66.2 |
| 1700K/RIB | 1700 | 66.9 |
| 1725K/RIB | 1725 | 67.9 |
| 1750K/RIB | 1750 | 68.9 |
| 1760K/RIB | 1760 | 69.3 |
| 1775K/RIB | 1775 | 69.9 |
| 1795K/RIB | 1795 | 70.7 |
| 1815K/RIB | 1815 | 71.5 |

| Part No. | Effective Length (mm) | Effective Length (inches) |
|-----------|-----------------------|---------------------------|
| 1830K/RIB | 1830 | 72.0 |
| 1843K/RIB | 1843 | 72.6 |
| 1854K/RIB | 1854 | 73.0 |
| 1863K/RIB | 1863 | 73.3 |
| 1868K/RIB | 1868 | 73.5 |
| 1880K/RIB | 1880 | 74.0 |
| 1885K/RIB | 1885 | 74.2 |
| 1900K/RIB | 1900 | 74.8 |
| 1905K/RIB | 1905 | 75.0 |
| 1930K/RIB | 1930 | 76.0 |
| 1949K/RIB | 1949 | 76.7 |
| 1963K/RIB | 1963 | 77.3 |
| 1971K/RIB | 1971 | 77.6 |
| 1980K/RIB | 1980 | 78.0 |
| 2031K/RIB | 2031 | 80.0 |
| 2050K/RIB | 2050 | 80.7 |
| 2070K/RIB | 2070 | 81.5 |
| 2080K/RIB | 2080 | 81.9 |
| 2100K/RIB | 2100 | 82.7 |
| 2115K/RIB | 2115 | 83.3 |
| 2120K/RIB | 2120 | 83.5 |
| 2145K/RIB | 2145 | 84.4 |
| 2164K/RIB | 2164 | 85.2 |
| 2170K/RIB | 2170 | 85.4 |

| Part No. | Effective Length (mm) | Effective Length (inches) |
|-----------|-----------------------|---------------------------|
| 2205K/RIB | 2205 | 86.8 |
| 2217K/RIB | 2217 | 87.3 |
| 2225K/RIB | 2225 | 87.6 |
| 2236K/RIB | 2236 | 88.0 |
| 2245K/RIB | 2245 | 88.4 |
| 2257K/RIB | 2257 | 88.9 |
| 2300K/RIB | 2300 | 90.6 |
| 2330K/RIB | 2330 | 91.7 |
| 2355K/RIB | 2355 | 92.7 |
| 2385K/RIB | 2385 | 93.9 |
| 2391K/RIB | 2391 | 94.1 |
| 2440K/RIB | 2440 | 96.1 |
| 2460K/RIB | 2460 | 96.9 |
| 2480K/RIB | 2480 | 97.6 |
| 2515K/RIB | 2515 | 99.0 |
| 2530K/RIB | 2530 | 99.6 |
| 2540K/RIB | 2540 | 100.0 |
| 2585K/RIB | 2585 | 101.8 |
| 2612K/RIB | 2612 | 102.8 |
| 2680K/RIB | 2680 | 105.5 |
| 2835K/RIB | 2835 | 111.6 |
| 2967K/RIB | 2967 | 116.8 |
| 4122K/RIB | 4122 | 162.3 |

L - SECTION

| Part No. | Effective Length (mm) | Effective Length (inches) |
|-----------|-----------------------|---------------------------|
| 954L/RIB | 954 | 37.6 |
| 991L/RIB | 991 | 39.0 |
| 1075L/RIB | 1075 | 42.3 |
| 1194L/RIB | 1194 | 47.0 |
| 1219L/RIB | 1219 | 48.0 |
| 1270L/RIB | 1270 | 50.0 |
| 1295L/RIB | 1295 | 51.0 |
| 1333L/RIB | 1333 | 52.5 |
| 1371L/RIB | 1371 | 54.0 |
| 1397L/RIB | 1397 | 55.0 |
| 1422L/RIB | 1422 | 56.0 |
| 1480L/RIB | 1480 | 58.3 |
| 1562L/RIB | 1562 | 61.5 |
| 1613L/RIB | 1613 | 63.5 |
| 1664L/RIB | 1664 | 65.5 |
| 1715L/RIB | 1715 | 67.5 |
| 1764L/RIB | 1764 | 69.4 |
| 1803L/RIB | 1803 | 71.0 |
| 1841L/RIB | 1841 | 72.5 |

| Part No. | Effective Length (mm) | Effective Length (inches) |
|-----------|-----------------------|---------------------------|
| 1943L/RIB | 1943 | 76.5 |
| 1981L/RIB | 1981 | 78.0 |
| 2020L/RIB | 2020 | 79.5 |
| 2055L/RIB | 2055 | 80.9 |
| 2070L/RIB | 2070 | 81.5 |
| 2096L/RIB | 2096 | 82.5 |
| 2134L/RIB | 2134 | 84.0 |
| 2197L/RIB | 2197 | 86.5 |
| 2235L/RIB | 2235 | 88.0 |
| 2324L/RIB | 2324 | 91.5 |
| 2362L/RIB | 2362 | 93.0 |
| 2477L/RIB | 2477 | 97.5 |
| 2515L/RIB | 2515 | 99.0 |
| 2705L/RIB | 2705 | 106.5 |
| 2743L/RIB | 2743 | 108.0 |
| 2845L/RIB | 2845 | 112.0 |
| 2895L/RIB | 2895 | 114.0 |
| 2921L/RIB | 2921 | 115.0 |
| 2997L/RIB | 2997 | 118.0 |

| Part No. | Effective Length (mm) | Effective Length (inches) |
|-----------|-----------------------|---------------------------|
| 3086L/RIB | 3086 | 121.5 |
| 3124L/RIB | 3124 | 123.0 |
| 3289L/RIB | 3289 | 129.5 |
| 3327L/RIB | 3327 | 131.0 |
| 3492L/RIB | 3492 | 137.5 |
| 3630L/RIB | 3630 | 142.9 |
| 3696L/RIB | 3696 | 145.5 |
| 4051L/RIB | 4051 | 159.5 |
| 4191L/RIB | 4191 | 165.0 |
| 4318L/RIB | 4318 | 170.0 |
| 4470L/RIB | 4470 | 176.0 |
| 4622L/RIB | 4622 | 182.0 |
| 5029L/RIB | 5029 | 198.0 |
| 5385L/RIB | 5385 | 212.0 |
| 6096L/RIB | 6096 | 240.0 |
| 6500L/RIB | 6500 | 255.9 |
| 7055L/RIB | 7055 | 277.8 |

M - SECTION

| Part No. | Nominal Effective Length (mm) | Nominal Effective Length (inches) |
|-----------|-------------------------------|-----------------------------------|
| 2286M/RIB | 2286 | 90.0 |
| 2388M/RIB | 2388 | 94.0 |
| 2515M/RIB | 2515 | 99.0 |
| 2693M/RIB | 2693 | 106.0 |
| 2832M/RIB | 2832 | 111.5 |
| 2921M/RIB | 2921 | 115.0 |
| 3010M/RIB | 3010 | 118.5 |
| 3124M/RIB | 3124 | 123.0 |
| 3327M/RIB | 3327 | 131.0 |
| 3531M/RIB | 3531 | 139.0 |

| Part No. | Nominal Effective Length (mm) | Nominal Effective Length (inches) |
|-----------|-------------------------------|-----------------------------------|
| 3734M/RIB | 3734 | 147.0 |
| 4089M/RIB | 4089 | 161.0 |
| 4191M/RIB | 4191 | 165.0 |
| 4470M/RIB | 4470 | 176.0 |
| 4648M/RIB | 4648 | 183.0 |
| 5029M/RIB | 5029 | 198.0 |
| 5410M/RIB | 5410 | 213.0 |
| 6121M/RIB | 6121 | 241.0 |
| 6502M/RIB | 6502 | 256.0 |
| 6883M/RIB | 6883 | 271.0 |

| Part No. | Nominal Effective Length (mm) | Nominal Effective Length (inches) |
|------------|-------------------------------|-----------------------------------|
| 7646M/RIB | 7646 | 301.0 |
| 8408M/RIB | 8408 | 331.0 |
| 9169M/RIB | 9169 | 361.0 |
| 9931M/RIB | 9931 | 391.0 |
| 10693M/RIB | 10693 | 421.0 |
| 12217M/RIB | 12217 | 481.0 |
| 13741M/RIB | 13741 | 541.0 |
| 15266M/RIB | 15266 | 601.0 |



“We are proud to be a European manufacturer; it is a privilege to supply our products to some of the world’s most prestigious original equipment manufacturers in the Agricultural, Automotive, Construction, Industrial and Motor Sport sectors”.



Agriculture

“Our distributor network is vital to the continued global growth of the DUNLOP brand and our valued distributor partners form the perfect link between manufacturer and end user”.



Automotive

“Our commitment to our staff, our customers and the environment is of paramount importance to our company, we will continue to develop our organisational skills to further enhance our company’s potential, to engage in sustainable practices and anticipate the needs and expectations of our customers”.



Construction

“We love our products”.

Ray Mifsud, Managing Director.

A handwritten signature in black ink, appearing to read 'R. Mifsud'.

Industrial

#WeLoveOurProducts



Motor Sport



TRANSMISSIONS

DUNLOP BTL Ltd, MPT House, Brunswick Road, Cobbs Wood Industrial Estate, Ashford, Kent TN23 1EL, UK
T: +44 (0)1233 663340 • F: +44 (0)1233 664440 • E: sales@dunlopctl.com • W: www.dunlopctl.com

DUNLOP™ and the Flying D device™ are used under licence by DUNLOP BTL Ltd.